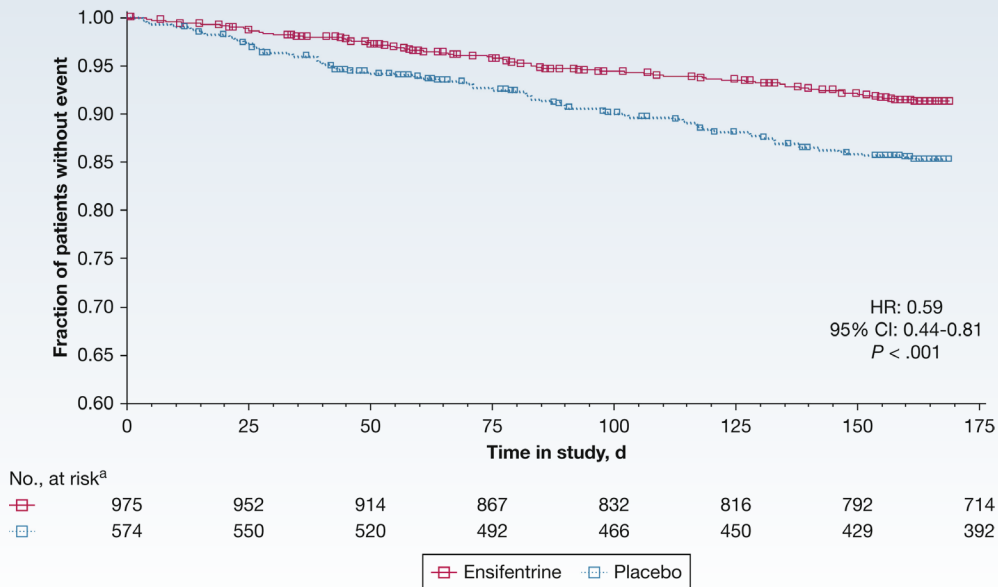


Does Enfentrine Reduce the Rate or Risk of COPD Exacerbations?

STUDY DESIGN

Prespecified, pooled analysis of phase 3 clinical trials (ENHANCE-1, ENHANCE-2) to assess the effect of enfentrine on exacerbation rate and risk (first time to exacerbation)

RESULTS



Enfentrine was associated with **significant reductions in rate** (rate ratio, 0.59; 95% CI, 0.43-0.80) and **risk of exacerbations** compared with placebo.

Enfentrine was associated with a numerical **delay in transitioning from an infrequent to frequent exacerbator** compared with placebo.

In this study, enfentrine was shown to reduce the rate of exacerbations and increased the time to first exacerbation among patients with COPD across a broad range of clinically relevant subgroups.